

STANDARD ARRIVAL  
CHART - INSTRUMENT  
(STAR) - ICAO

TRANSITION ALTITUDE  
10000 FT

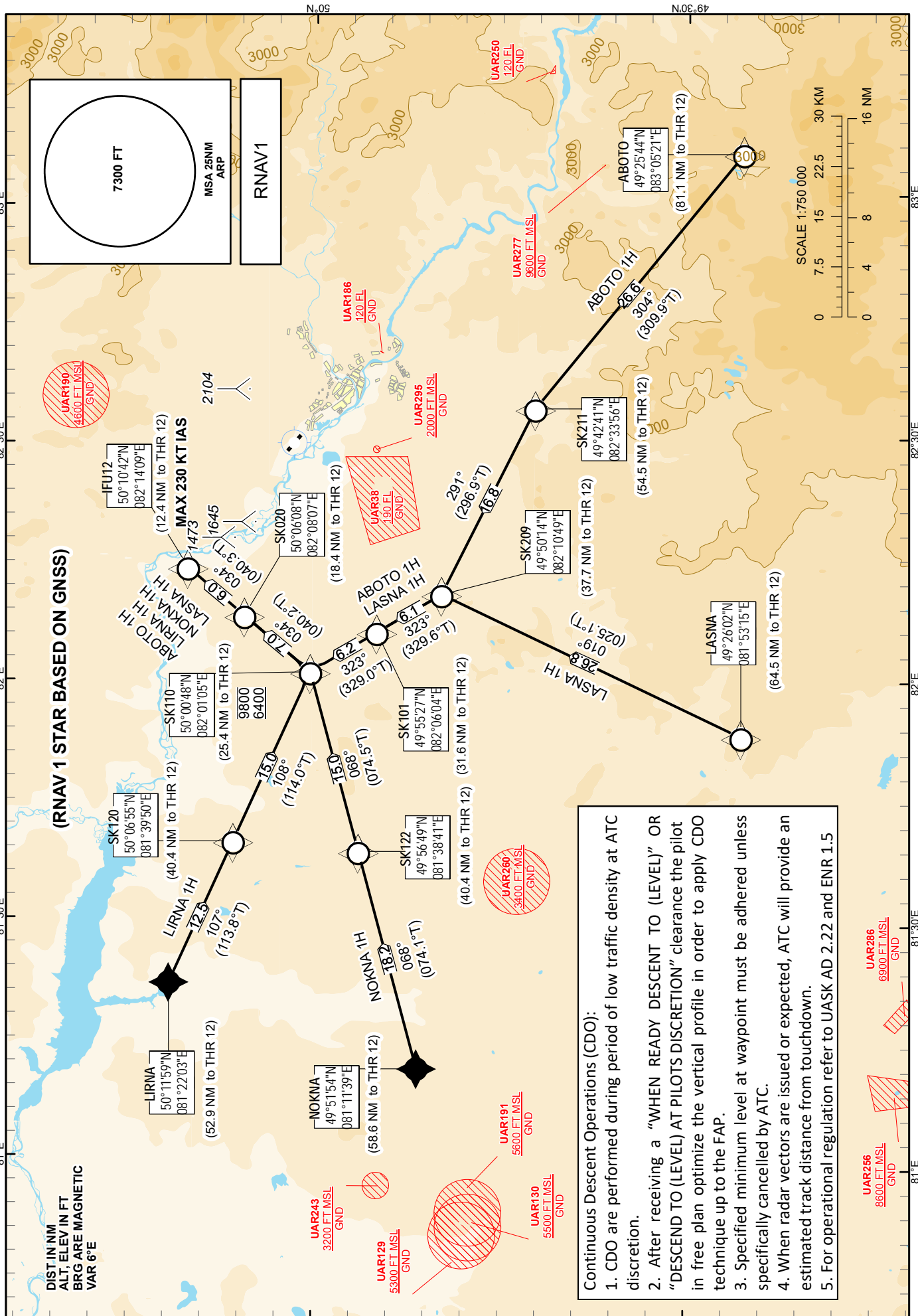
UST-KAMENOGORSK TOWER 130.1  
UST-KAMENOGORSK ATIS (EN) 124.2  
UST-KAMENOGORSK ATIS (RU) 127.7

ABOTO 1H, LASNA 1H,  
LIRNA 1H, NOKNA 1H

UST-KAMENOGORSK  
RWY 12

CHANGE: Add ATIS, editorial.

DIST IN NM  
ALT, ELEV IN FT  
BRG ARE MAGNETIC  
VAR 6°E



Continuous Descent Operations (CDO):

1. CDO are performed during period of low traffic density at ATC discretion.
2. After receiving a "WHEN READY DESCENT TO (LEVEL)" OR "DESCEND TO (LEVEL) AT PILOTS DISCRETION" clearance the pilot in free plan optimize the vertical profile in order to apply CDO technique up to the FAP.
3. Specified minimum level at waypoint must be adhered unless specifically cancelled by ATC.
4. When radar vectors are issued or expected, ATC will provide an estimated track distance from touchdown.
5. For operational regulation refer to UASK AD 2.22 and ENR 1.5

TABULAR DESCRIPTION											
ABOTO 1H RWY 12											
Serial Number	Path Descriptor	Waypoint Identifier	Fly - over	Course °M(°T)	Magnetic Variation(°)	Distance NM	Turn Direction	Altitude FT	Speed KT	VPA (°)	Navigation Specification
10	IF	ABOTO	-	-	+6.3	-	-	+180 FL/-290 FL	-280	-	RNAV 1
20	TF	SK211	-	304(309.9)	+6.3	26.6	L	+120 FL/-200 FL	-250	-2.1	RNAV 1
30	TF	SK209	-	291(296.9)	+6.3	16.8	L	+8400/-140 FL	-	-2	RNAV 1
40	TF	SK101	-	323(329.6)	+6.3	6.1	R	+7400/-120 FL	-	-1.6	RNAV 1
50	TF	SK110	-	323(329)	+6.3	6.2	-	+6400/-9800	-	-1.5	RNAV 1
60	TF	SK020	-	034(40.2)	+6.3	7.0	R	+5200/-7400	-	-1.6	RNAV 1
70	TF	IFU12	-	034(40.3)	+6.3	6.0	-	+4300/-5300	-230	-1.4	RNAV 1

WAYPOINT LIST		
ABOTO 1H		
Waypoint Identifier		Coordinates
ABOTO		492544.00N 0830521.00E
SK211		494241.09N 0823356.37E
SK209		495014.45N 0821048.75E
SK101		495527.06N 0820604.08E
SK110		500047.75N 0820105.13E
SK020		500607.80N 0820806.59E
IFU12		501041.78N 0821409.08E

TABULAR DESCRIPTION											
LASNA 1H RWY 12											
Serial Number	Path Descriptor	Waypoint Identifier	Fly - over	Course °M(°T)	Magnetic Variation(°)	Distance NM	Turn Direction	Altitude FT	Speed KT	VPA (°)	Navigation Specification
10	IF	LASNA	-	-	+6.3	-	-	+140 FL/-230 FL	-280	-	RNAV 1
20	TF	SK209	-	019(25.1)	+6.3	26.8	R	+8400/-140 FL	-250	-2	RNAV 1
30	TF	SK101	-	323(329.6)	+6.3	6.1	L	+7400/-120 FL	-	-1.6	RNAV 1
40	TF	SK110	-	323(329)	+6.3	6.2	-	+6400/-9800	-	-1.5	RNAV 1
50	TF	SK020	-	034(40.2)	+6.3	7.0	R	+5200/-7400	-	-1.6	RNAV 1
60	TF	IFU12	-	034(40.3)	+6.3	6.0	-	+4300/-5300	-230	-1.4	RNAV 1

WAYPOINT LIST		
LASNA 1H		
Waypoint Identifier		Coordinates
LASNA		492602.00N 0815315.00E
SK209		495014.45N 0821048.75E
SK101		495527.06N 0820604.08E
SK110		500047.75N 0820105.13E
SK020		500607.80N 082006.59E
IFU12		501041.78N 0821409.08E

TABULAR DESCRIPTION											
LIRNA 1H RWY 12											
Serial Number	Path Descriptor	Waypoint Identifier	Fly - over	Course °M(°T)	Magnetic Variation(°)	Distance NM	Turn Direction	Altitude FT	Speed KT	VPA (°)	Navigation Specification
10	IF	LIRNA	-	-	+6.3	-	-	+120 FL/-190 FL	-280	-	RNAV 1
20	TF	SK120	-	107(113.8)	+6.3	12.5	L	+9000/-150 FL	-250	-2.3	RNAV 1
30	TF	SK110	-	108(114)	+6.3	15.0	-	+6400/-9800	-	-1.6	RNAV 1
40	TF	SK020	-	034(40.2)	+6.3	7.0	L	+5200/-7400	-	-1.6	RNAV 1
50	TF	IFU12	-	034(40.3)	+6.3	6.0	-	+4300/-5300	-230	-1.4	RNAV 1

WAYPOINT LIST		
LIRNA 1H		
Waypoint Identifier		Coordinates
LIRNA		501159.00N 0812203.00E
SK120		500655.33N 0813950.50E
SK110		500047.75N 0820105.13E
SK020		500607.80N 0820806.59E
IFU12		501041.78N 0821409.08E

TABULAR DESCRIPTION											
NOKNA 1H RWY 12											
Serial Number	Path Descriptor	Waypoint Identifier	Fly - over	Course °M(°T)	Magnetic Variation(°)	Distance NM	Turn Direction	Altitude FT	Speed KT	VPA (°)	Navigation Specification
10	IF	NOKNA	-	-	+6.3	-	-	+130 FL/-210 FL	-280	-	RNAV 1
20	TF	SK122	-	068(74.1)	+6.3	18.2	R	+9000/-150 FL	-250	-2.1	RNAV 1
30	TF	SK110	-	068(74.5)	+6.3	15.0	-	+6400/-9800	-	-1.6	RNAV 1
40	TF	SK020	-	034(40.2)	+6.3	7.0	L	+5200/-7400	-	-1.6	RNAV 1
50	TF	IFU12	-	034(40.3)	+6.3	6.0	-	+4300/-5300	-230	-1.4	RNAV 1

WAYPOINT LIST		
NOKNA 1H		
Waypoint Identifier		Coordinates
NOKNA		495154.00N 0811139.00E
SK122		495648.89N 0813840.97E
SK110		500047.75N 0820105.13E
SK020		500607.80N 0820806.59E
IFU12		501041.78N 0821409.08E